



European  
Commission

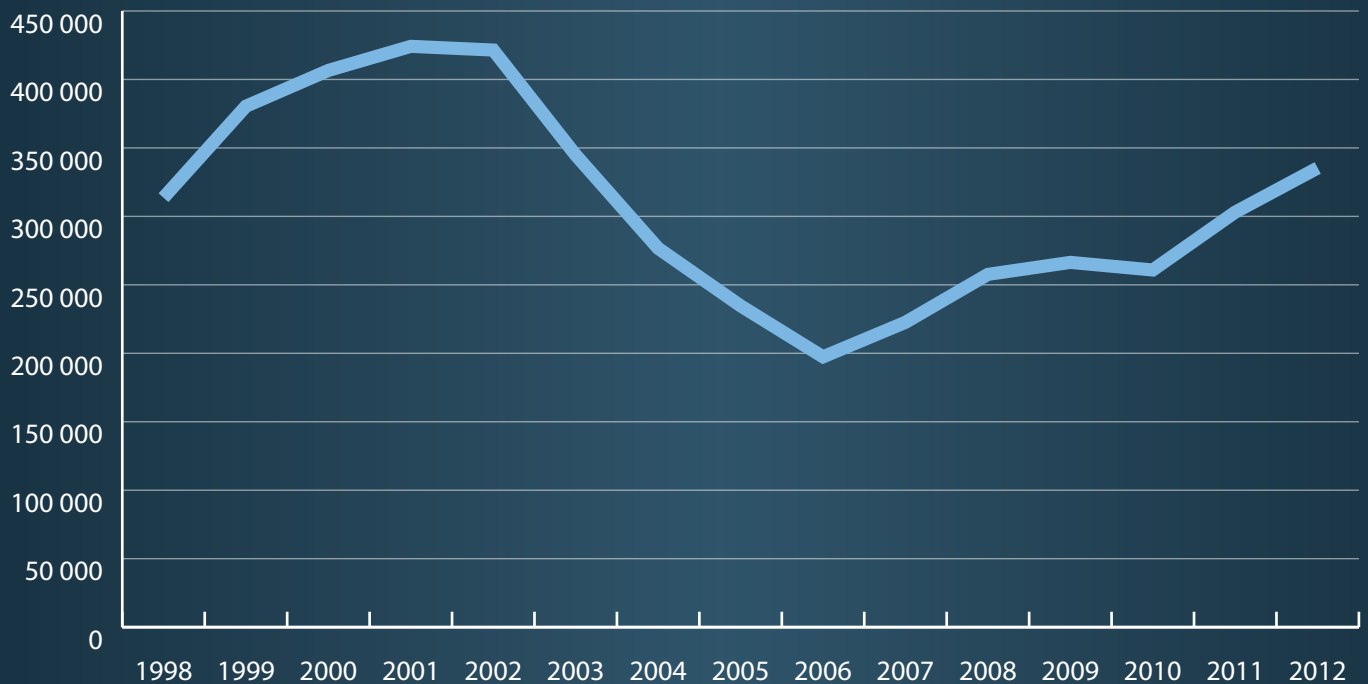
# ASYLUM IN THE EU

Source: Eurostat 4/6/2013, unless otherwise indicated

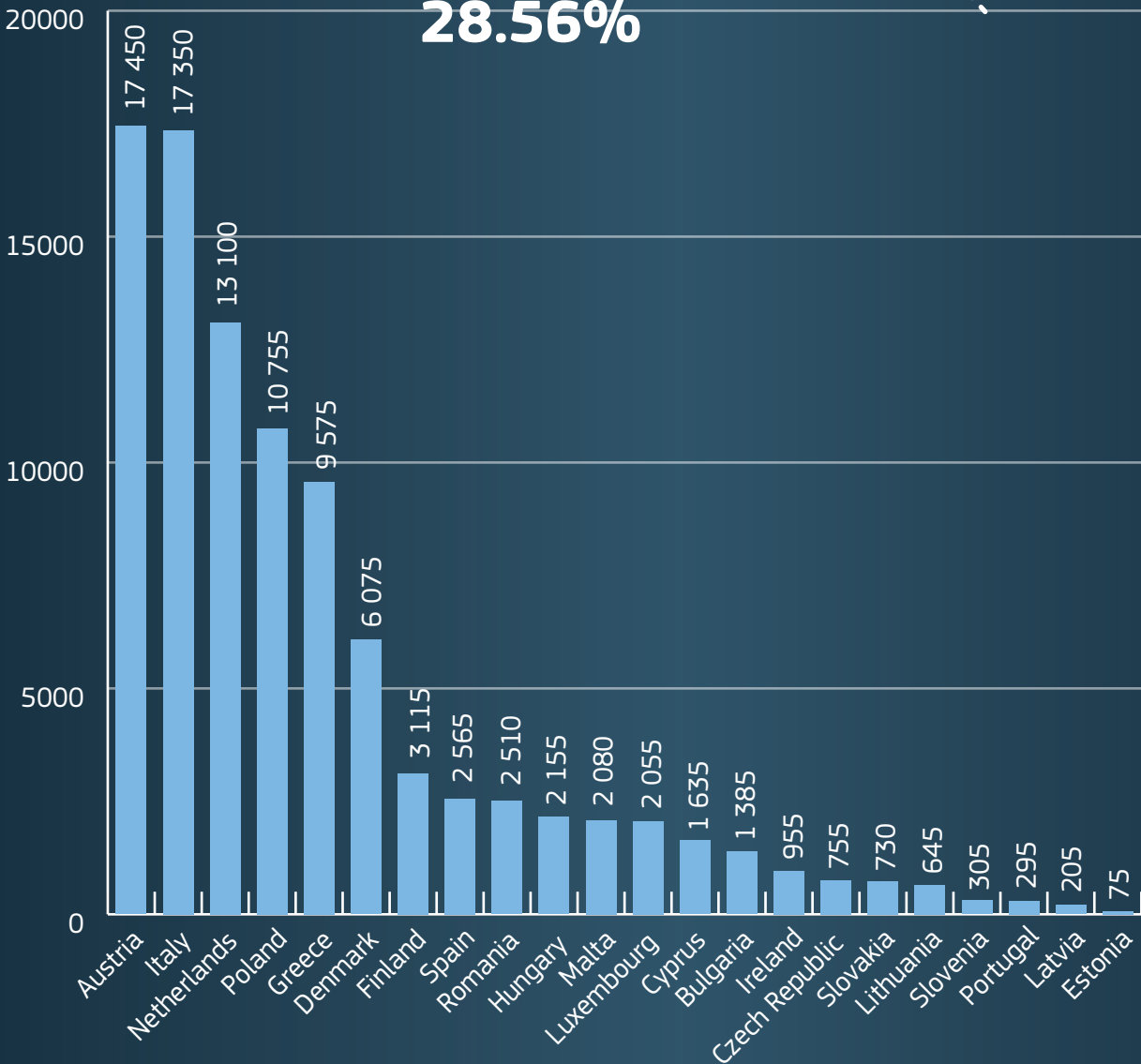
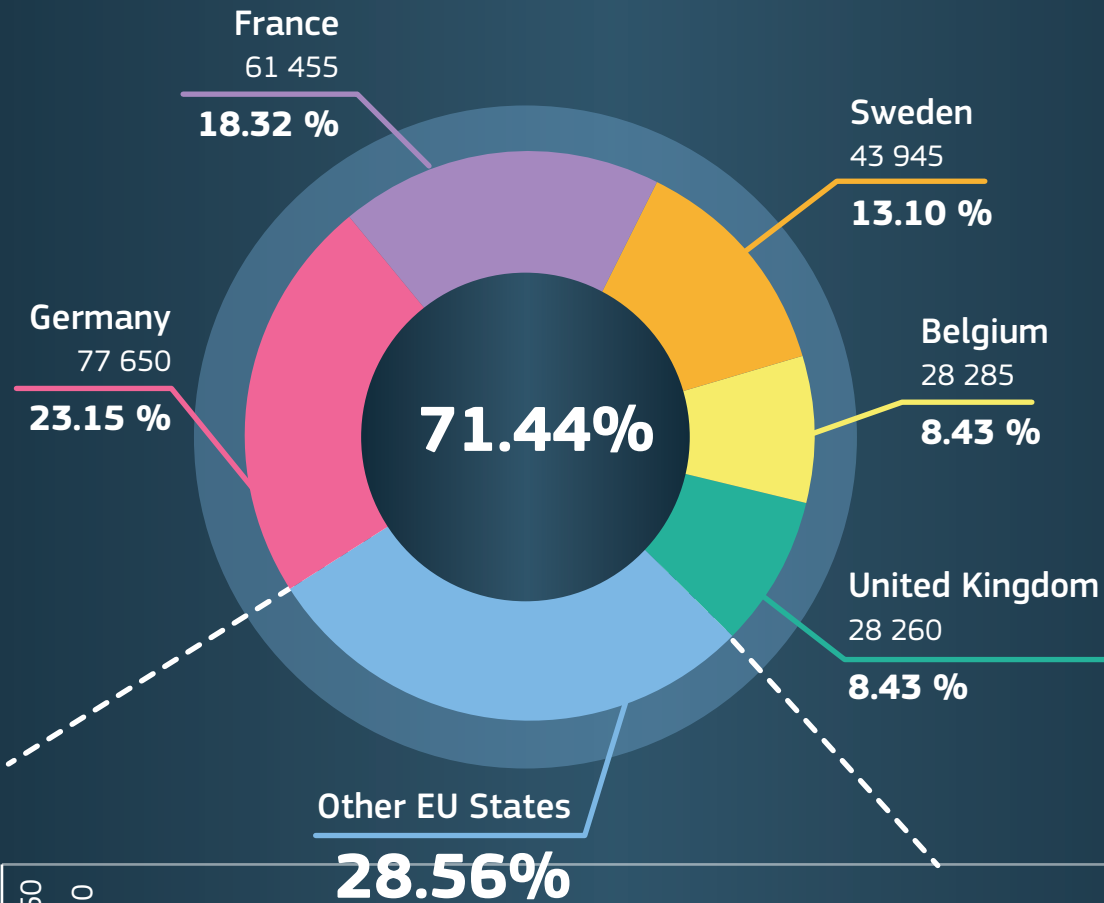
## ASYLUM APPLICATIONS IN THE EU27

Total number of asylum applications in 2012

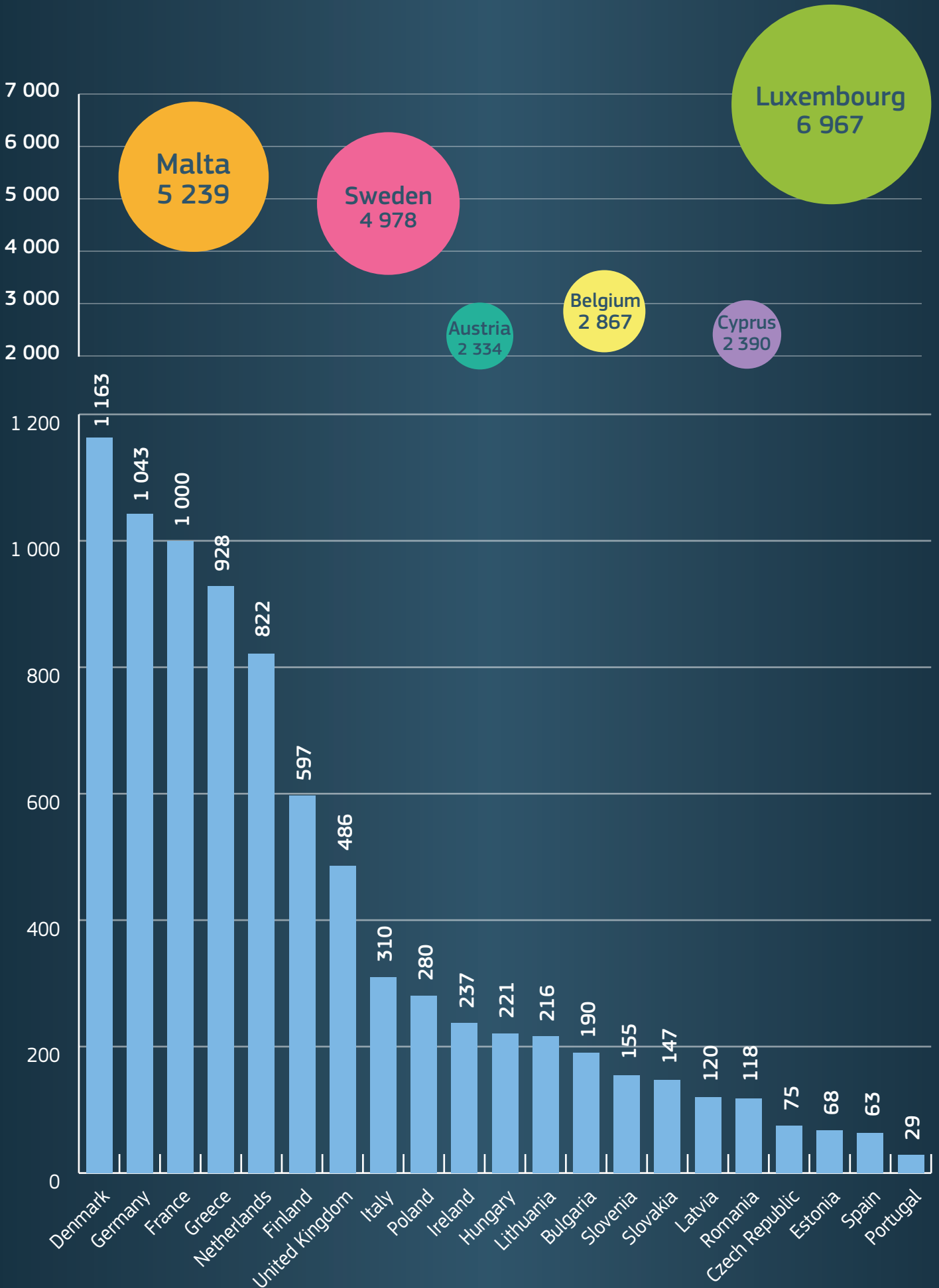
**335 365**



## Share by EU State



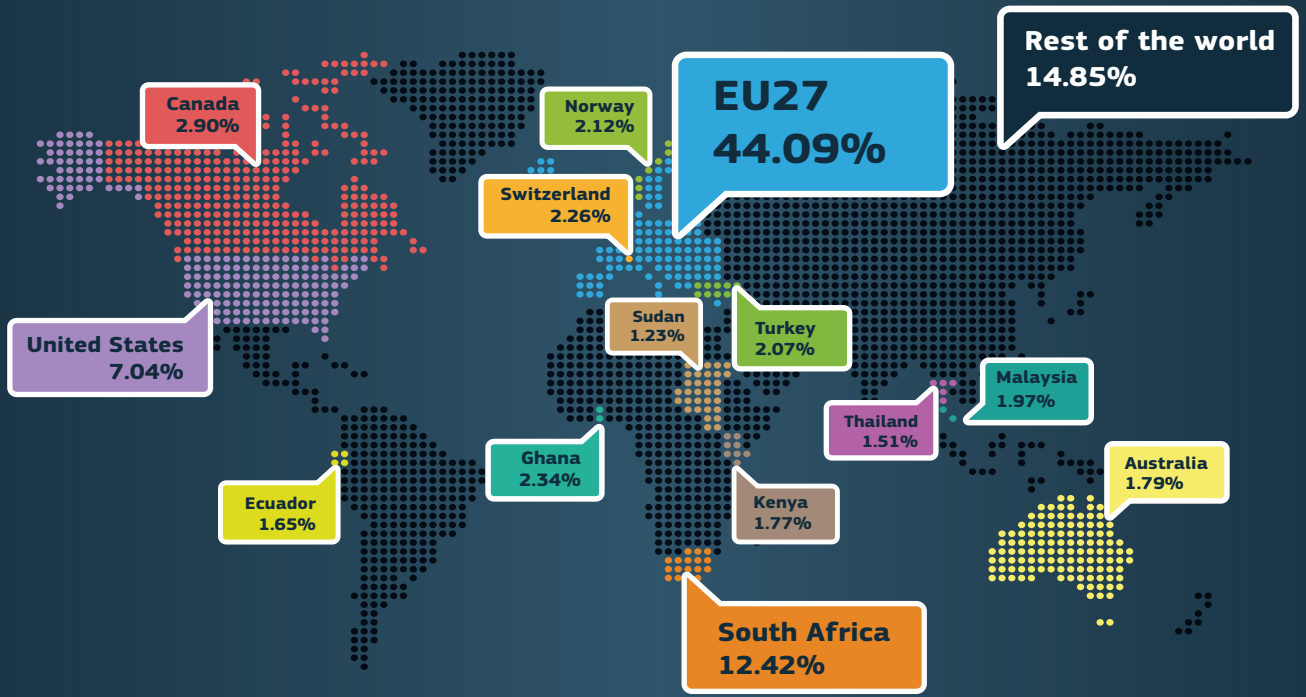
## Number of asylum applications per 1 million inhabitants



# ASYLUM IN THE WORLD

Total number of asylum applications in 2011

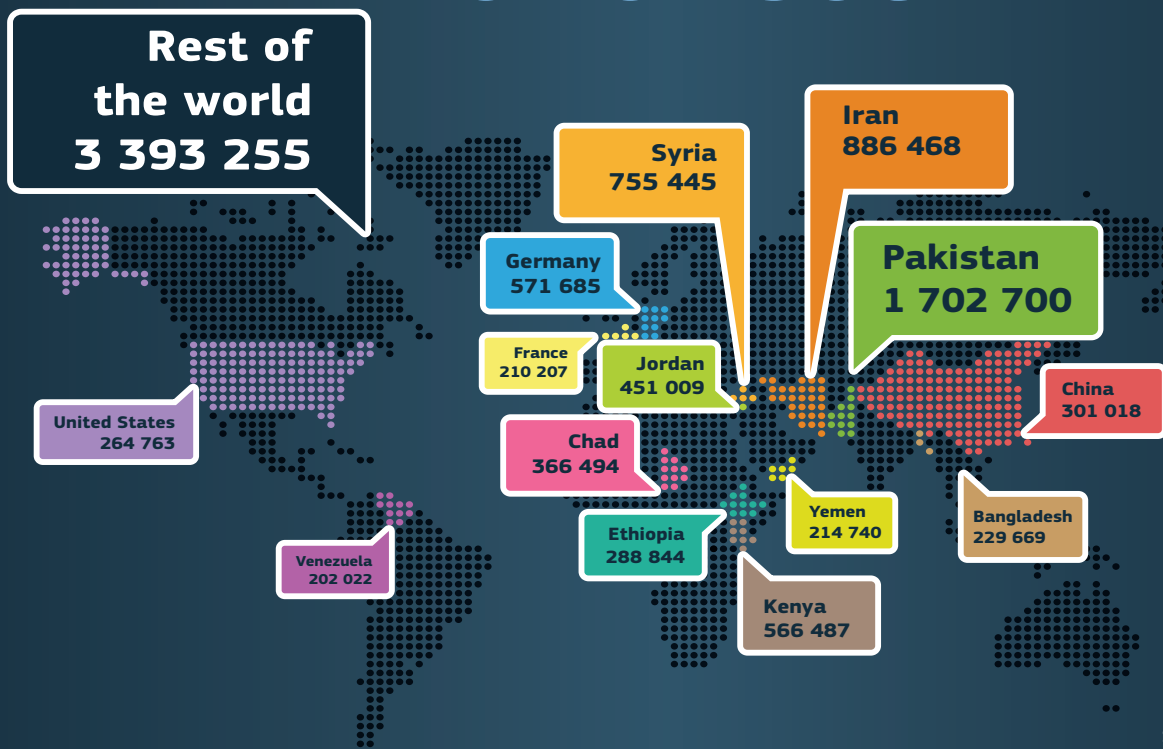
## 860 654



Source: UNHCR

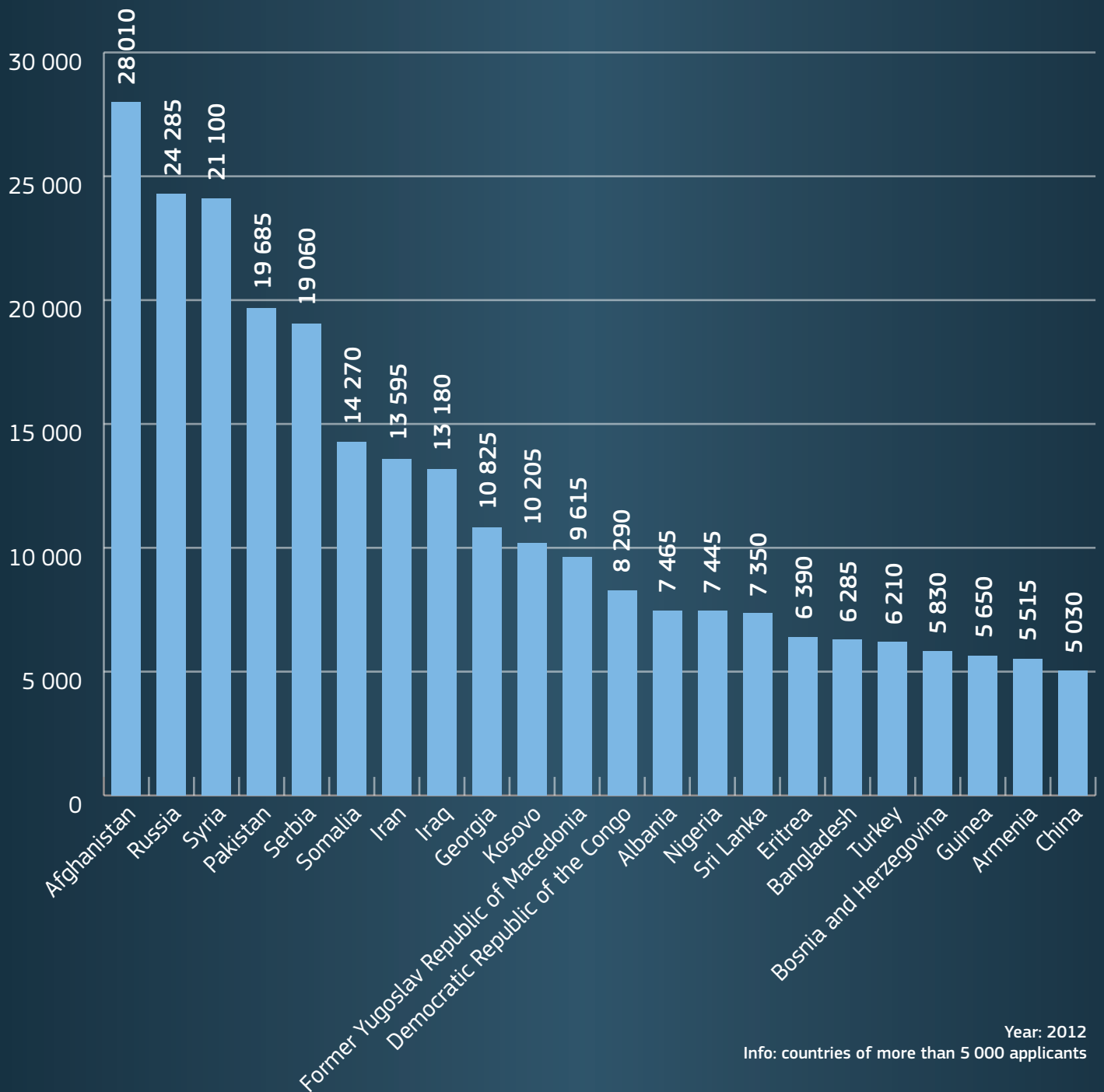
Refugee population in 2011

## 10 404 806



Source: UNHCR

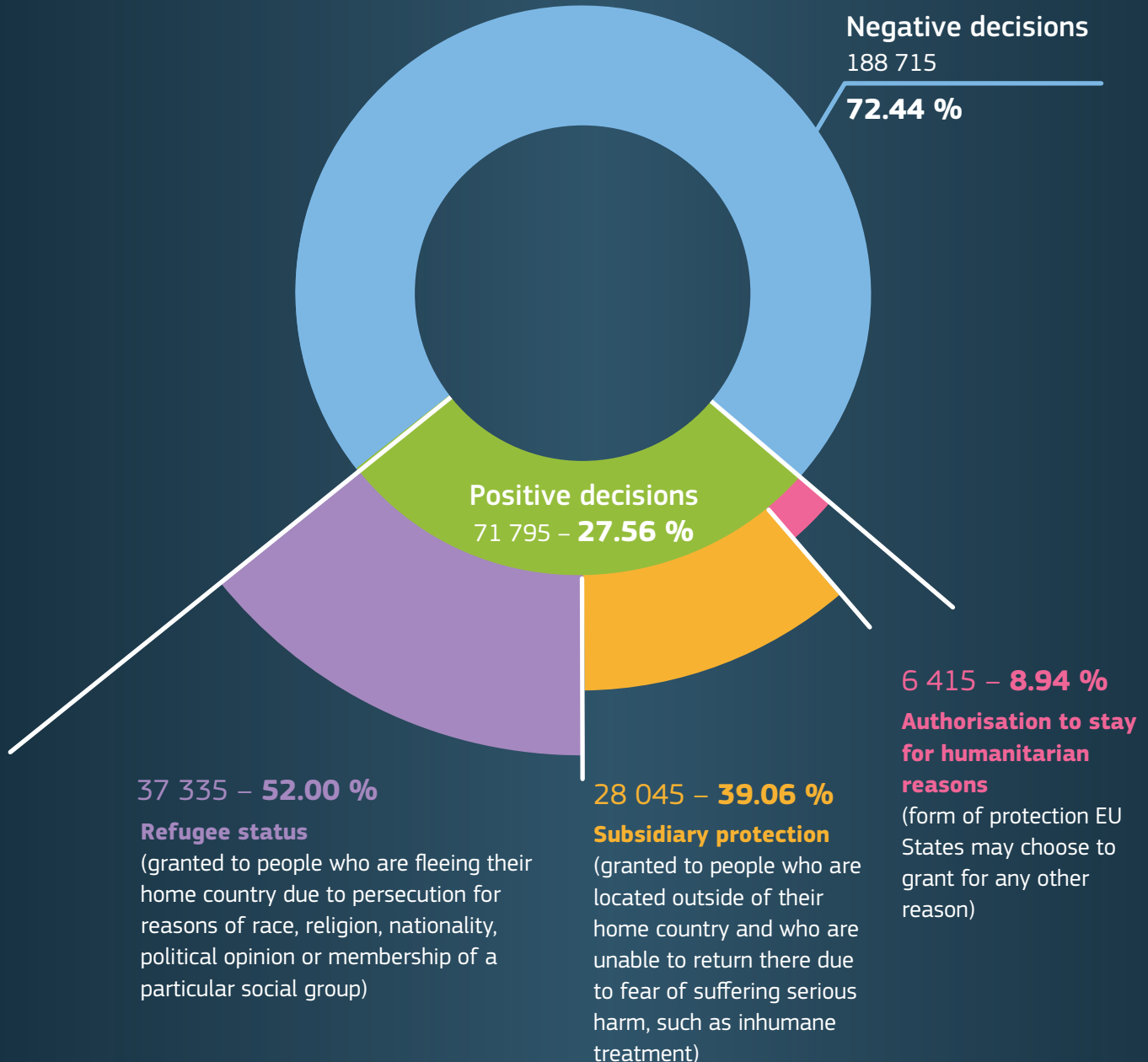
# COUNTRIES OF ORIGIN OF ASYLUM APPLICANTS TO THE EU27



# DECISIONS ON ASYLUM APPLICATIONS IN THE EU27

Total number of first instance decisions taken in 2012

## 260 510



Year: 2012

Info: no data available for the Netherlands

# EU ACTION



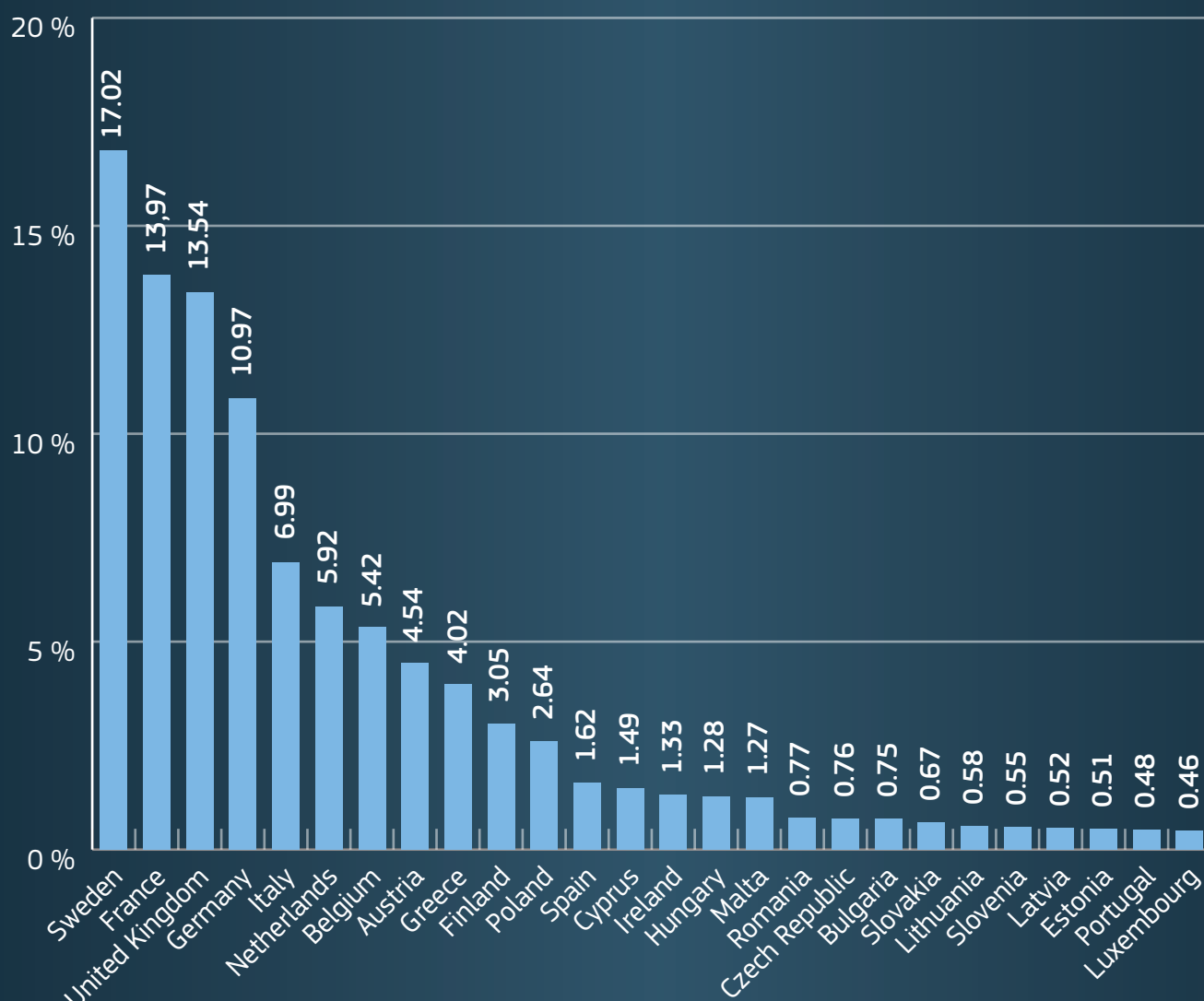
## Financial support to EU States through the European Refugee Fund

(for receiving asylum seekers, for asylum procedures, for relocation within the EU and for resettlement from non-EU countries).

Apart from a fixed amount (500 000 EUR/year), the annual allocations are calculated on the basis of the number of persons (refugees) admitted by an EU State over the previous three years and the number of persons (asylum seekers) registered in the EU State over the previous three years. EU States that resettle refugees from non-EU countries are entitled to an additional amount per person.

## Distribution of funds (2012)

### 101,14 million EUR



Info: in million EUR  
Source: DG Home Affairs, 2013

---

### **Operational assistance to EU States through the European Asylum Support Office**

(e.g. in situations of mass influx of asylum seekers, assistance in managing asylum applications and in putting in place appropriate reception facilities)



### **Legislation to create the Common European Asylum System**

(common minimum standards for asylum in all EU States, especially regarding reception conditions and the procedures for granting/withdrawing refugee status)

---

### **International solidarity in the form of resettlement**

(transferring people in need of international protection from a non-EU country to an EU State where they will be given refugee status)

### **Regional protection programmes**

(financial and technical assistance to the non-EU countries of asylum)



Disclaimer: Information in this infographic is for reference purposes only and is not necessarily comprehensive, complete, accurate or up to date.

<http://ec.europa.eu/dgs/home-affairs/>